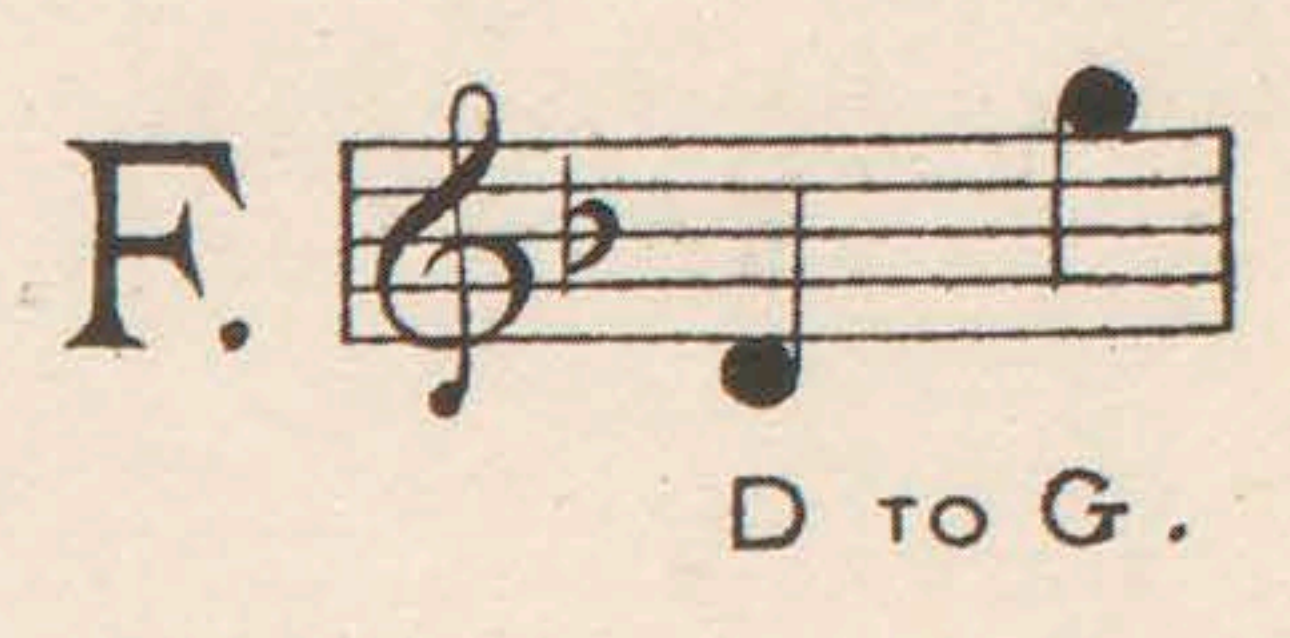
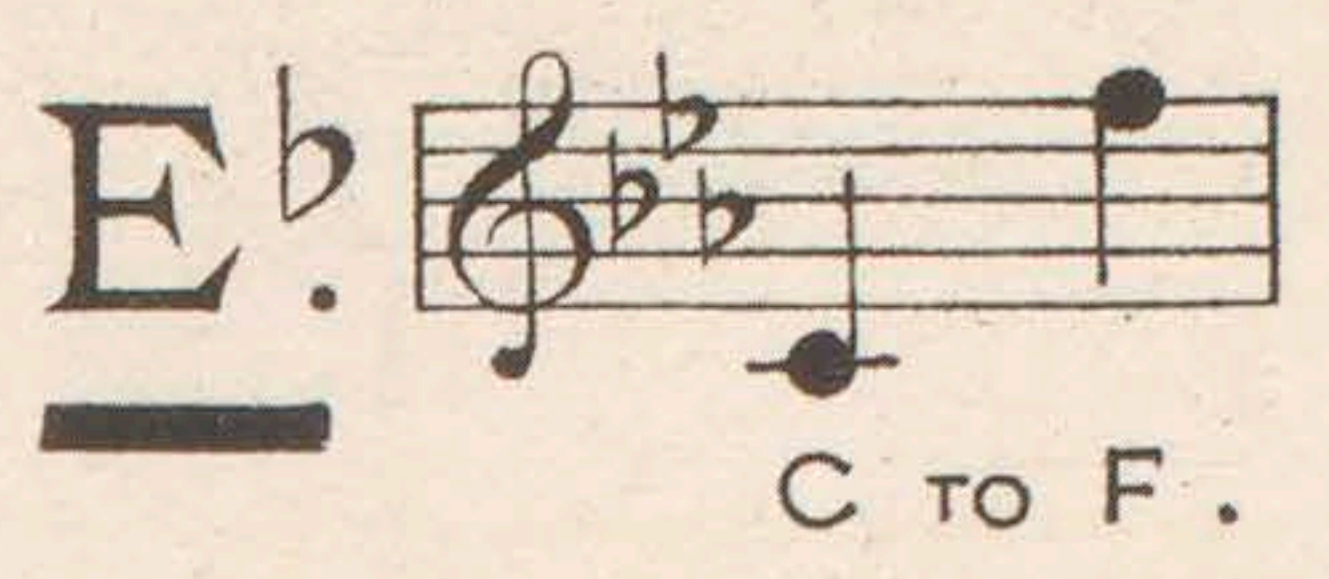
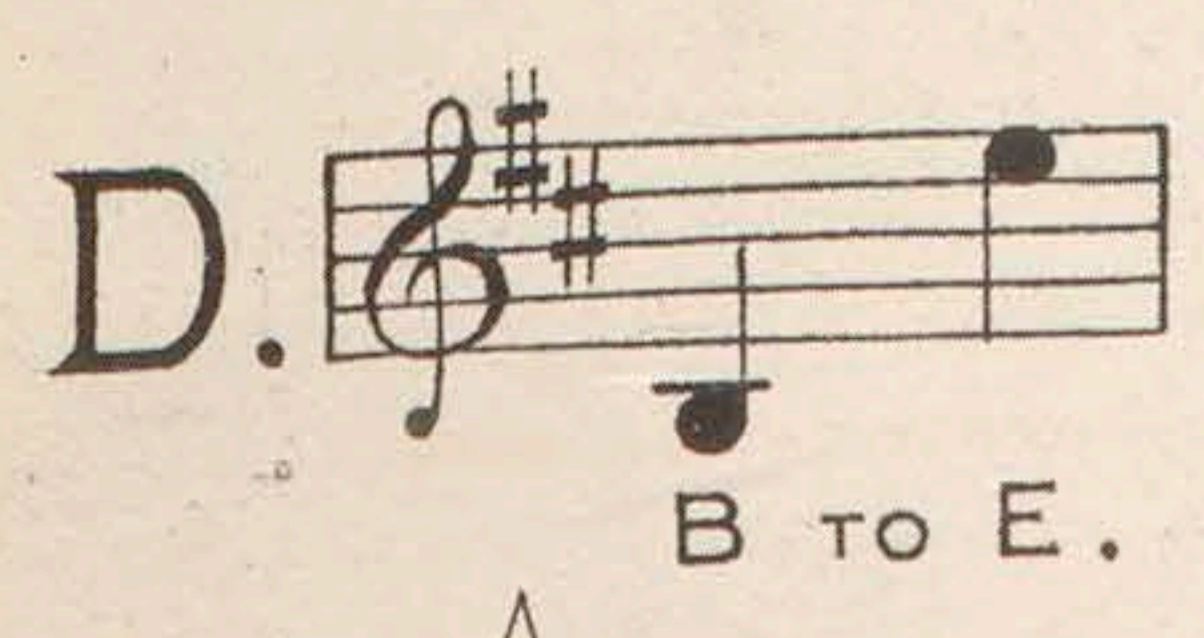


Dedicated to
AND
SUNG BY
MISS KATE SAVILE HUGHES.



WHEN I AM DEAD, MY DEAREST.

Song

Words by
CHRISTINA ROSSETTI
(By permission of Messrs Macmillan & Co Ltd.)

Music by
PHILIP HARKER.

Copyright
U.S.A. 1897.

By the same Composer:
CLEANSING FIRES 4/-

Price 4/-

London:
PHILLIPS & PAGE, 8 OXFORD MARKET, W.

[MAY BE SUNG IN PUBLIC WITH THESE WORDS ONLY]

When I am Dead, my Dearest!



When I am dead, my dearest,
Sing no sad songs for me;
Plant thou no roses at my head
Nor shady cypress tree.

Be the green grass above me
With showers and dewdrops wet,
And, if thou wilt, remember,
And, if thou wilt, forget.

I shall not see the shadows,
I shall not feel the rain,
I shall not hear the nightingale
Sing on as if in pain:

But dreaming through the twilight
That doth not rise or set,
I haply may remember,
I haply may forget.

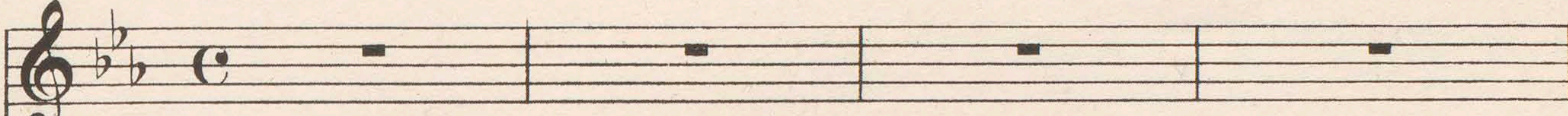
CHRISTINA ROSETTI.

WHEN I AM DEAD, MY DEAREST.

Words by
CHRISTINA ROSETTI.

Music by
PHILIP HARKER.

Andante sostenuto.

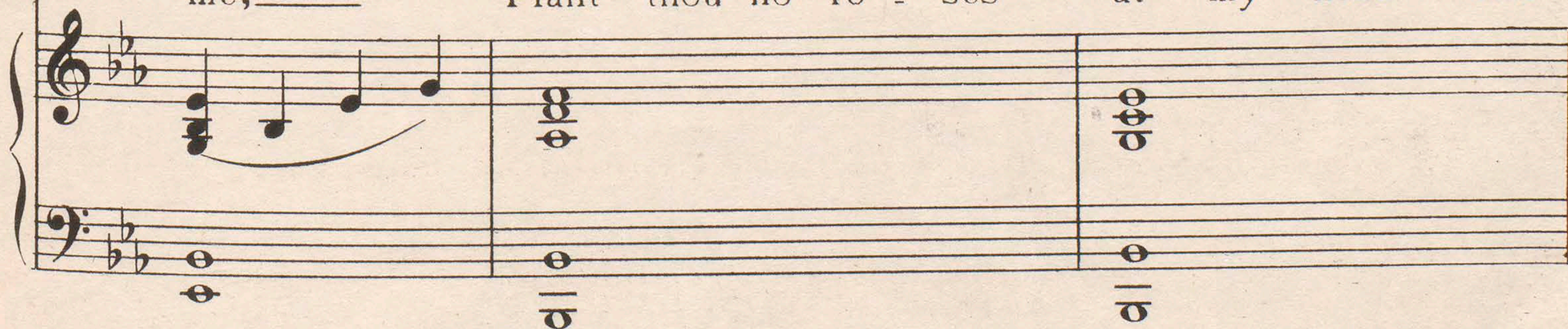
VOICE. 

PIANO. 

When I am dead, my dear - est, Sing no sad songs for



me; — Plant thou no ro - ses at my head Nor



sha - dy cy - press tree; — Be the green grass a -

- bove me With show'rs and dew - drops wet, —

And, if thou wilt, re - mem - ber, And, if thou wilt, for -

- get.

a tempo *rit.*

I shall not see the sha - dows,

mf a tempo

affettuoso.

I shall not feel the rain, I shall not hear the

night - in gale Sing on as if in pain; But

dream - ing through the twi - light That

doth not rise nor — set, I

rit. *a tempo*

hap - ly may re - mem - ber, I hap - ly may for -

colla voce.

rall - *en* - *tan* - *do*

- get, I hap - ly may re - mem - ber,

rall *en* *tan* *do*

p

I hap - ly may for - get. —

dim. *p* *pp*

THREE GOOD SONGS,

either for

 CONCERT or DRAWING ROOMS. 

FABIAN ROSE'S

SONG,

MY BELOVED QUEEN.
MY BELOVED QUEEN.
MY BELOVED QUEEN.
MY BELOVED QUEEN.
MY BELOVED QUEEN.

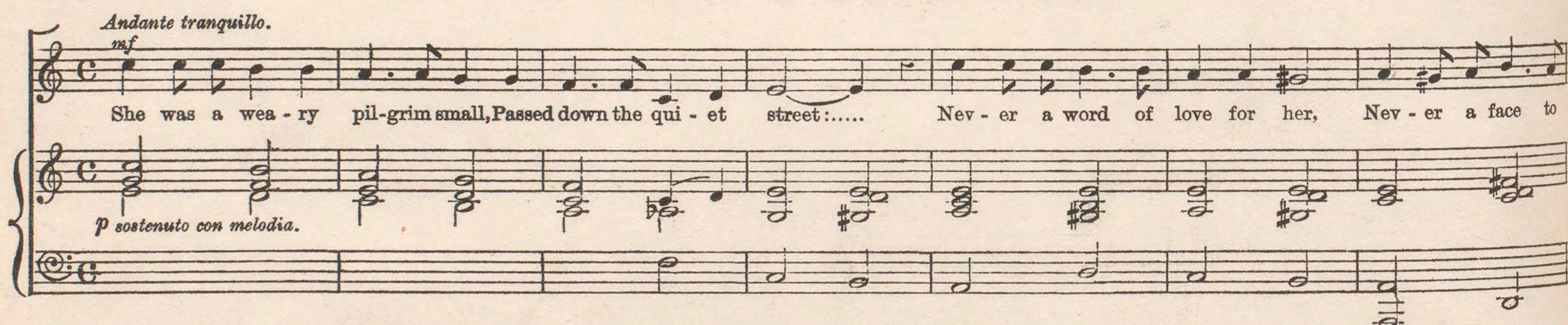


Published in E \flat , F (C to F), G and B \flat . Orchestral parts in F.

HARTWELL JONES'

SONG,

THE GREAT ETERNAL HOME.
THE GREAT ETERNAL HOME.
THE GREAT ETERNAL HOME.
THE GREAT ETERNAL HOME.
THE GREAT ETERNAL HOME.

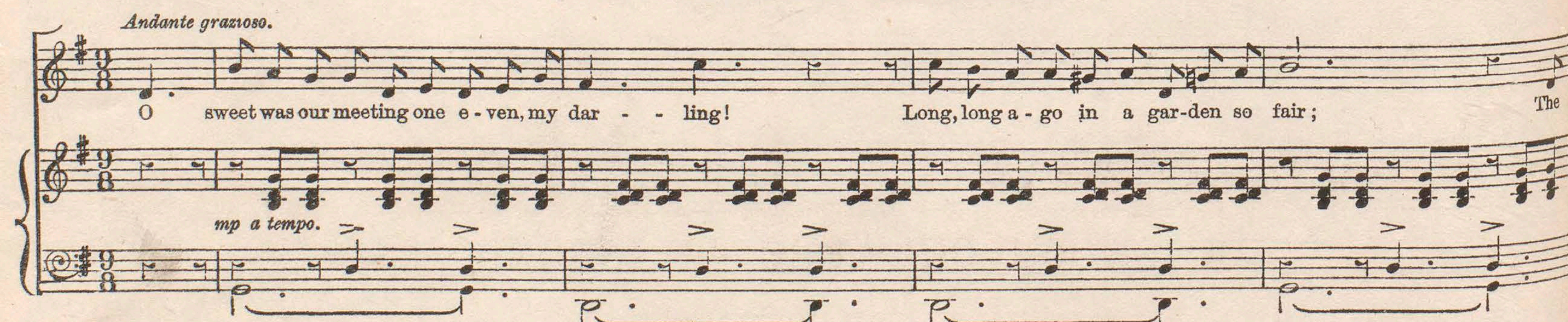


Published in B \flat , C (C to E), D and E \flat . Orchestral parts in C.

JOSEPH H. ADAMS'

SONG,

THE GARDEN OF LOVE.
THE GARDEN OF LOVE.
THE GARDEN OF LOVE.
THE GARDEN OF LOVE.
THE GARDEN OF LOVE.



Published in F, G (D to E) and A. Orchestral parts in G.

London:—PHILLIPS & PAGE, 8, Oxford Market, W.