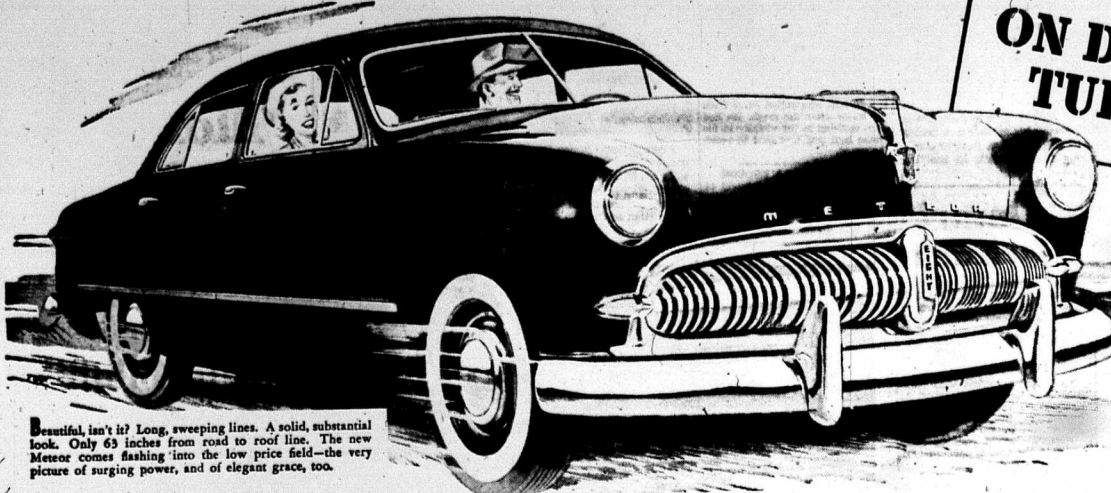


**ON DISPLAY
TUESDAY**



Beautiful, isn't it? Long, sweeping lines. A solid, substantial look. Only 63 inches from road to roof line. The new Meteor comes flashing 'into the low price field—the very picture of surging power, and of elegant grace, too.



The Meteor offers wonderful ease of control. With new type steering linkage, this car holds a straight course, gives fingertip steering. Extremely sensitive braking. A pleasure to drive.



Lots of room everywhere. Exceptionally low floor; wide doors—so this car is easy to get into. Rear seat 60 inches wide. Rich upholstery. Distinctive trim and fittings.



Beautiful instrument panel, illuminated with "black light", has instrument cluster directly in front of driver for instant reading. New 100-horsepower, V-type, 8-cylinder engine gives smooth power, packs high performance with economical operation.



Riding in Meteor is smooth, restful, vibrationless. Seats are slung like a hammock between front and rear wheels. Independent front wheel suspension. Coil springs in front... long, longitudinal rear springs. Springs and telescopic shock absorbers are tuned in perfect balance. Fresh air at the touch of your finger with Meteor's dual-duct, built-in ventilation system.

Or like a rocket! The new Meteor swoops away from a dead start, breezes briskly up any hill. A grand car to drive! A grand car to ride in. See it, examine it now—this sensational new car in the low price field.



For wide-open visibility Meteor has an almost unbroken sweep of safety glass—front, sides and rear.



That great, roomy trunk has 19 cu. ft. of usable luggage space. Spare tire can be reached without disturbing the luggage.

Be miles ahead with

Meteor.

A PRODUCT OF FORD OF CANADA

JUST ARRIVED AT YOUR MERCURY AND LINCOLN DEALER'S