

Greater Thematic
MUSIC CUE SHEET



The Cat and the
Canary

GREATER THEMATIC MUSIC CUE SHEET

for

"The CAT and the CANARY"

*A Super Mystery Drama Adapted for the Screen From the Stage
Play of the Same Name*

COMPILED BY JAMES C. BRADFORD

THE purpose of this "GREATER THEMATIC MUSIC CUE SHEET" is to make possible a more detailed and accurate rendition of suggested music, a perfect sequence of modulations from one selection to another, a more careful handling of the dynamics for effects, and, in fact, to supersede the complete music score, usually published and unusually completely used.

BY carefully adhering to the suggestions offered on this Thematic Music Cue Sheet together with the types and styles of musical selections picked for the various scenes, actions and characters, a most effective and satisfactory performance must result from any theatre combination of musicians, as extra care was taken to select only such arrangements as could be properly and effectively played by any size orchestra, or even with Organ or Piano.

AS the picture calls for music of a mysterious, foreboding and gruesome character throughout, with a slight comedy relief here and there, it is important that sufficient changes of tempo and character of the music be made, in order to offset a monotonous performance of the production.

AN effect that will carry out the illusion of the mysterious house on the hill, is the use of the wind machine back stage, and the effect of flapping draperies in the desolate corridor; a soft effect of wind for the corridor scenes with a crescendo as the door is opened, preceded by a ponderous pounding of the knocker on the wooden door, will create the suspense called for. Loud music for this production is unwarranted, and a soft mystical touch throughout is what is demanded, except for the final scenes which start with the struggle in the cellar and continue through to the end of the picture. Lots of action is demanded from this point until the capture of the masquerader.

THE themes in this production are described as follows:

MYSTERY THEME: (Cues 5, 8, 11, 14, 21, 27, 29, 41, 48, 50, 53, 62) A gruesome monotonous minor selection which appropriately creates the mystery and desolation of the locale of the scenes; it should be played at all times with muted brass and very "P" in dreary tempo, "Silent Night" (Rebikov).

MAMMY THEME: (Cues 6, 19, 25, 31) A perpetual movement showing the uncertainty and questionable position of this woman who is distrusted by everyone in the household. Play "P" at all times. "Unfinished Symphony" (Schubert).

PAUL THEME: (Cues 13, 24, 38, 52, 65) A humorous characteristic showing the nervous character of an uneasy mortal of peculiar characteristics. "Animal Cartoonix No. 2" (Aborn).

SUSAN THEME: (Cues 20, 30, 37, 44) A humorous chatterbox selection depicting the gabbling of this old maid. "Chatter" (Kahn).

GUARD THEME: (Cues 26, 32) a mysterious march showing the official position of this uniformed person in search of someone. "Marche Miniature" (Jacobi).

LOVE THEME: (Cues 39, 66) A popular song ballad with a good swing, and an appropriate text. "How I Love You" (Brown).


Continued on Inside of Back Cover

Thematic Music  **Cue Sheet**

M. J. MINTZ (PATENT)
JULY 31, 1923.

- 1 AT SCREENING Phantoms (Schad) ¾ Min.

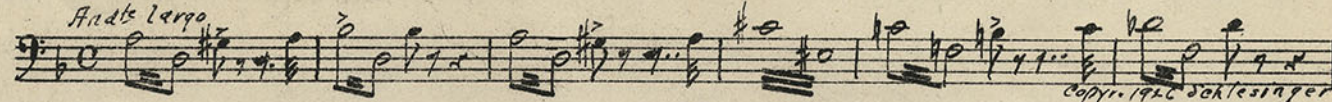
Mysterioso



Copy. 1925 Sanders Co

2. (Title) ON A LONELY PINE CLAD HILL The Hour of Ghosts (Becca) 1 Min.

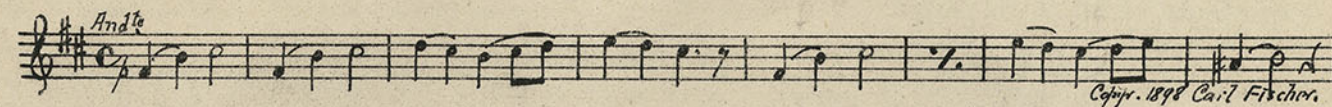
Andte Largo



Copyr. 1926 Schlessinger

3. (Action) INSERT—LAST WILL AND TESTAMENT OF...Ase's Death from "Peer Gynt" (Grieg) ½ Min.

Andte



Copyr. 1898 Carl Fischer

4. (Title) AND FOR TWENTY YEARS Misterioso Dramatico No. 22 (Borch) ¾ Min.


All: giusto



Copyr. 1916 S. M. Borg

5. (Title) NOTE: Play very slow "PP" with monotonous bass. BUT ON THE NIGHT MYSTERY THEME: Silent Night (Rebikov) 1 Min.

Largo, pesante e lugubre

Copyr. 1917 G. Schirmer

6. (Action) NOTE: Play with muted brass "PP" and very weird. MAMMY PLEASANT APPEARS MAMMY THEME: Unfinished Symphony (Schubert) 2 Min.

All: modte







Copyr. 1896 C. Fischer

NOTE: Catch knock on door.

7. (Action) ROGER CROSBY AT SAFEMystification (Hosmer) 1/2 Min.

Modio non moto e mist.

Copyr. 1924 Oliver Watson

8. (Action) HE SEES MOTH IN SAFEMYSTERY THEME: Silent Night (Rebikov) 3/4 Min.

Targo pesante e lugubre

Copyr. 1917 G. Schirmer

9. (Action) KNOCK ON DOOR Omens (Schad) 1 Min.

Allo modto

Copyr. 1925 Sanders Co

10. (Title) HARRY BLYTHEThe Season's Greetings (Marquardt) 1/2 Min.

Copyr. 1927 Music Buyers

11. (Action) AUTO HEADLIGHTS APPEAR ON DARK ROADElopement (Carrozzini) 1 1/2 Min.

Virace

Copyr. 1926 Sonnemann M.

- NOTE: Catch knock on door.
12. (Action) AUNT SUSAN AND CECILY ENTERMYSTERY THEME: Silent Night (Rebikov) 1/2 Min.

Targo pesante e lugubre

Copyr. 1917 G. Schirmer

13. (Action) EXTERIOR-HEADLIGHTS OF ANOTHER MACHINE APPEAR PAUL THEME: Animal Cartoonix No. 2 (Aborn) 2 1/4 Min.

Allo

Copyr. 1925 Belwin Inc

NOTE: Play "PP" when cat is seen on road, and produce effect of cat spitting if possible. Do not fail to catch report of tire blow-out, knocking on door as previously, wind effects, etc.

14. (Title) IT IS MIDNIGHT—READ THE WILL.....MYSTERY THEME: Silent Night (Rebikov)¾ Min.

Largo, pesante e lugubre

Copyright 1917 by G. Schirmer.

15. (Action) ANNABELLE ENTERS Junella (Kahn)1¼ Min.

NOTE: Catch knock on door.

Mod^{to}

Copyright 1924 Feature Music.

16. (Title) THAT CLOCK HASN'T STRUCK IN TWENTY YEARS Silence—no music¾ Min.

17. (Action) CLOCK STOPS STRIKING—CROSBY OPENING ENVELOPE Desert Monotony (Abern)2¾ Min.

All^o mod^o

Copyright 1922 Belwin.

18. (Action) HARRY CONGRATULATES ANNABELLE.....Soubrette (Silbert)½ Min.

All^o

Copyright 1925 E. Ascher.

19. (Action) MAMMY PLEASANT APPEARS WITH ENVELOPEMAMMY THEME: Unfinished Symphony (Schubert).....½ Min.

All^o mod^o

Copyright 1896 C. Fischer.

20. (Title) I'M GOING, I DON'T WANT THE CRAZY FOOL'S MONEYSUSAN THEME: Chatter (Kahn)1½ Min.

Tempo Rubato

Copyright 1916 Sonnemann.

21. (Title) NOW I KNOW HE WAS CRAZYMYSTERY THEME: Silent Night (Rebikov)1 Min.

Largo, pesante e lugubre

Copyright 1917 by G. Schirmer.

22. (Title) IF YOU EVER NEED ME FOR ANYTHING....L'Encore (Herbert)1½ Min.

Mod^{to}

Copyright 1916 by G. Schirmer.

NOTE: Silence until painting crashes—catch this effect, then start Mystery Theme.

23. (Action) ANNABELLE AND CROSBY ALONE IN ROOMSinister Misterioso (Berge) ¾ Min.

Musical notation for item 23, including a treble clef, a key signature of one flat, and a tempo marking of *Lento*. The notation consists of a single staff with a melodic line. Copyright notice: *Copyr. 1925 by Robbins - Engel.*

24. (Action) FLASH-BACK TO FAMILY AT TABLE— PAUL TALKING PAUL THEME: Animal Cartoonix No. 2 (Aborn)..... ½ Min.

Musical notation for item 24, including a treble clef, a key signature of one flat, and a tempo marking of *All.^o*. The notation consists of a single staff with a melodic line. Copyright notice: *Copyr. 1925 by Robbins - Engel.*

25. (Action) MAMMY PLEASANT ENTERS WITH TRAY...MAMMY THEME: Unfinished Symphony (Schubert)..... ½ Min.

Musical notation for item 25, including a treble clef, a key signature of one flat, and a tempo marking of *All.^o Moderato*. The notation consists of a single staff with a melodic line. Copyright notice: *Copyr. 1896 by Carl Fischer.*

26. (Action) GUARD ENTERS GUARD THEME: Marche Miniature (Jacobi) 2¾ Min.

Musical notation for item 26, consisting of three staves of music. The notation includes a treble clef, a key signature of one flat, and a common time signature. Copyright notice: *Copyr. 1916 G. Schirmer.*

NOTE: Play rather moderately as a March Misterioso.
27. (Action) FLASH-BACK TO ANNABELLE AND CROSBY. MYSTERY THEME: Silent Night (Rebikov) 1½ Min.

Musical notation for item 27, consisting of three staves of music. The notation includes a treble clef, a key signature of one flat, and a tempo marking of *Largo, pesante e lugubre*. Copyright notice: *Copyr. 1917 G. Schirmer.*

NOTE: Crescendo on muted brass as bookcase in back moves—very weird, same effect for appearance of hand, strangling of Crosby, disappearance.
28. (Action) ANNABELLE DISCOVERS CROSBY MISSING..Laocoon (Leuschner) 2½ Min.

Musical notation for item 28, including a treble clef, a key signature of one flat, and a tempo marking of *Largamente ma fiato*. The notation consists of a single staff with a melodic line. Copyright notice: *Copyr. 1925 Albert Schaber.*

NOTE: Open up "FF" and play to temperament of picture.
29. (Action) CLOSE-UP OF ANNABELLE MYSTERY THEME: Silent Night (Rebikov) ¾ Min.

Musical notation for item 29, consisting of three staves of music. The notation includes a treble clef, a key signature of one flat, and a tempo marking of *Largo, pesante e lugubre*. Copyright notice: *Copyr. 1917 G. Schirmer.*

30. (Title) I'LL BET SHE KNOWS WHERE SUSAN THEME: Chatter (Kahn) 3/4 Min.

Musical notation for item 30, including tempo marking *Tempo rubato* and copyright notice *Copyr. 1916 Sonne mann.*

31. (Action) MAMMY ENTERS MAMMY THEME: Unfinished Symphony (Schubert)..... 1/2 Min.

Musical notation for item 31, including tempo marking *All: mod^{to}* and copyright notice *Copyright 1896 C. Fischer.*

32. (Action) GUARD APPEARS AGAIN GUARD THEME: Marche Miniature (Jacobi) 1/2 Min.

Musical notation for item 32, including tempo marking *Marcia* and copyright notice *Copyr. 1916 G. Schirmer.*

33. (Action) ANNABELLE ALONE IN ROOM Misterioso Dramatique No. 54 (Borch) 1/2 Min.

Musical notation for item 33, including tempo marking *Poco Agitato* and copyright notice *copyr 1917 by S. H. Berg.*

34. (Title) NOBODY HAS SLEPT IN THAT BED..... Indian Invocation (Herbert) (2nd Move.)..... 1/2 Min.

Musical notation for item 34, including tempo marking *Maestoso* and copyright notice *Copyr. 1917 G. Schirmer.*

35. (Action) SUSAN SITTING ON BED ALONE Ghost In the Haunted Room (Anthony) 1 3/4 Min.

Musical notation for item 35, including tempo marking *Mist.* and copyright notice *copyr 1924 by O. Disson*

36. (Title) WHAT ARE YOU DOING HERE Notte Misteriosa (Becca) 1/2 Min.

Musical notation for item 36, including tempo marking *And:te* and copyright notice *copyr 1925 by Schlesinger.*

37. (Action) FLASH-BACK TO SUSAN SUSAN THEME: Chatter (Kahn) 1/2 Min.

Musical notation for item 37, including tempo marking *Tempo rubato* and copyright notice *Copyr. 1916 Sonne mann.*

38. (Action) PAUL AT DOOR OF ANNABELLE'S ROOM... PAUL THEME: Animal Cartoonix No. 2 (Aborn)..... 1/2 Min.

Musical notation for item 38, including tempo marking *All:to* and copyright notice *Copyr. 1925 Belwin, Inc.*

39. (Title) I'M NOT AT ALL CLEVER LOVE THEME: How I Love You (Brown)..... 3/4 Min.

Musical notation for item 39, including tempo marking *Mod^{to}*

Musical notation for the first line of the final section.

Musical notation for the second line of the final section.

Musical notation for the third line of the final section, including first and second endings and copyright notice *Copyr. 1925 Irving Berlin.*

40. (Action) ANNABELLE OPENS LETTER MYSTERY THEME: Silent Night (Rebikov) 1 Min.

Largo pesante e lugubre

Copyright 1917 G. Schirmer

41. (Action) PAUL IN DARK HALLWAY Queer Antics (Zamecnik) 1 Min.

All: mod:to

Copyright 1927 Sam Fox

42. (Action) CECILY STARTS TO REMOVE CLOTHES..... I Gotta Get Myself Somebody to Love (Handman)..... 1 1/4 Min.

Mod:to

Copyright 1926 Jerome H. Remick

43. (Action) SUSAN LOOKS UNDER BED Majestic Misterioso (Kilenvi) 1/2 Min.

All: ma:stoso

Copyright 1925 Belwin

44. (Title) YOU'RE NOT WHAT AUNT SUSAN EXPECTED SUSAN THEME: Chatter (Kahn) 1 1/4 Min.

Tempo rubato

Copyright 1926 Sonnemann

45. (Action) ANNABELLE LOOKING FOR BUTTON..... Misterioso Burlesque (Savino) 1/2 Min.

All: mod:to

Copyright 1924 Robbins-Engel

46. (Action) PANEL OPENS—ANNABELLE FINDS JEWEL CASE Conspiracy (Zamecnik) 1/2 Min.

All:

Copyright 1922 Sam Fox

47. (Action) PAUL ON DARK STAIRS In Gloomy Forest (Axt) 1 Min.

And:to

Copyright 1925 Robbins-Engel

48. (Action) CURTAINS AT HEAD OF BED MOVE..... MYSTERY THEME: Silent Night (Rebikov) 1/2 Min.

Largo pesante e lugubre

Copyright 1917 by G. Schirmer

- 49. (Action) HAND TEARS NECKLACE FROM ANNABELLE'S THROAT Repeat No. 28 "Laocoon" 3 Min.

Largamento ma fero.

- 50. (Action) PANEL OPENS—CROSBY'S BODY FALLS OUT MYSTERY THEME: Silent Night (Rebikov) 1/2 Min.

Largo pesante e lugubre.

Copyright 1917 by G. Schirmer.

NOTE: Stop music when panel opens—absolute quiet—just a dull thud on the timpany as body falls, then start music.

- 51. (Action) ANNABELLE FAINTS AND IS CARRIED OUT. Reproach (Zamecnik) 3 Min.

Modto con moto

Copyright 1927 Sam Fox.

- 52. (Title) WHAT'S ALL THIS ABOUT PAUL PAUL THEME: Animal Cartoonix No. 2 (Aborn) 1 1/4 Min.

Allto

Copyright 1925 Belwin.

- 53. (Action) BODY DISCOVERED MISSING MYSTERY THEME: Silent Night (Rebikov) 1/2 Min.

Largo pesante e lugubre

Copyright 1917 G. Schirmer.

- 54. (Action) PAUL ENTERS PANEL—ANNABELLE CAUGHT Defense of Honor (Zamecnik) 2 Min.

Alls

Copyright 1927 Sam Fox.

- 55. (Action) FIGURE IN DOORWAY WATCHING ANNABELLE Weird Misterioso (Kilenyi) 2 1/2 Min.

Modto

Copyright 1920 Belwin.

- 56. (Action) PAUL IN CELLAR Dramatic Agitato No. 22 (Simon) 1/2 Min.

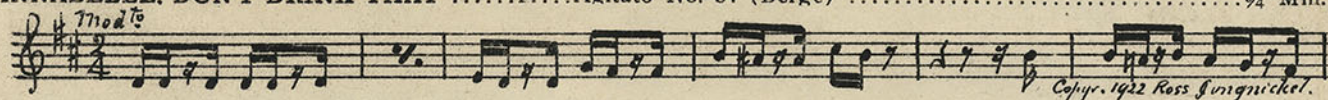
Con moto

Copyright 1920 Belwin.

- 57. (Action) FLASH-BACK TO ANNABELLE AND DOCTOR. Repeat No. 55 "Weird Misterioso" 1/2 Min.

Modto

58. (Title) ANNABELLE. DON'T DRINK THAT Agitato No. 84 (Berge) ¾ Min.



59. (Action) GUARD APPEARS GUARD THEME: Marche Miniature (Jacobi) ½ Min.



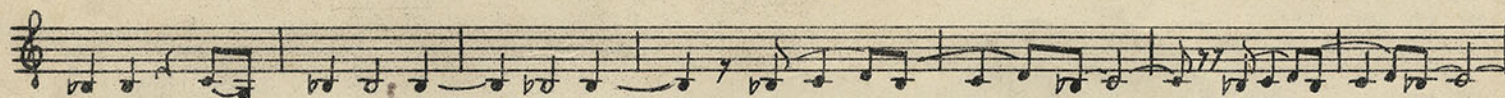
50. (Action) FLASH TO PAUL IN CELLAR AGAIN.....Disturbance (Zamecnik) 2 Min.



- NOTE: Catch fall, etc., ad lib.
61. (Action) MILK WAGON AND SUSAN Poursuite Dramatique (Drigo's Cinema Classics) ¾ Min.



62. (Action) ANNABELLE ALONE IN ROOM—
DOOR OPENS IN BACK OF HER.....MYSTERY THEME: Silent Night (Rebikov) ¾ Min.



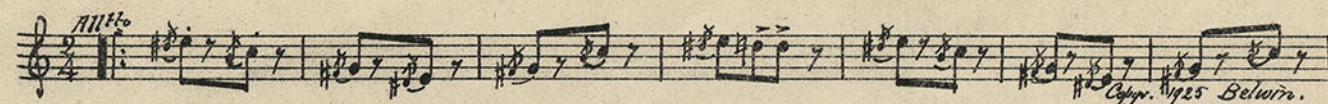
63. (Action) CLOAKED FIGURE GRABS ANNABELLE....The Ambush (Patou) 2 Min.



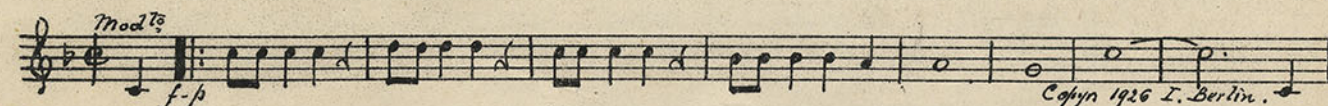
- NOTE: Catch crashes, falls, etc., ad lib.
64. (Title) LOOK OUT FOR HIM Agitation (Borch) 1 Min.



65. (Title) EVERYTHING'S ALL RIGHT ANNABELLE...PAUL.THEME: Animal Cartoonix No. 2 (Aborn) ½ Min.



66. (Action) CECILY AND AUNT SUSAN OPEN DOOR.....LOVE THEME: How I Love You (Brown) 1 Min.



SUGGESTIONS *for* PLAYING

- Cue 1. Open up with a Phantom Patrol, and play rather "F" with muted brass.
- Cue 2. A dramatic mystical selection of a dread character. Snarling animals such as cats may be reproduced moderately, but great care must be exercised in the handling of such effects so as not to burlesque this sequence.
- Cue 3. A dirge typical of death and loneliness.
- Cue 4. A marked Mysterioso played "P" with a soft tread effect on tympani, and wind effects softly for the corridor bits.
- Cue 5. **MYSTERY THEME**
- Cue 6. **MAMMY THEME:** Here the knocking effect may be used as arrivals appear at door. Crescendo wind for opening of door; "P" for corridor bits.
- Cue 7. A soft Mysterioso.
- Cue 8. **MYSTERY THEME**
- Cue 9. An ominous marked Mysterioso with dramatic pauses. Here knocking on door occurs again with the wind "F" for opening, and "P" for corridor.
- Cue 10. A light hurry of the perpetual motion character. A soft auto horn may be used effectively, be careful not to burlesque. Here knocking on door occurs again with the following effects as previously used.
- Cue 11. A light Intermezzo brightly played to offset the previous mystical atmosphere.
- Cue 12. **MYSTERY THEME**
- Cue 13. **PAUL THEME:** A humorous characteristic. Catch effect of Ford auto horn "P," cat in middle of road spitting, and tire blow-out. Here knocking on door occurs again with the following effects as previously used.
- Cue 14. **MYSTERY THEME:** Here knocking on door occurs again followed as previously suggested.
- Cue 15. A light Caprice played very brightly as a relief to the previous selections.
- Cue 16. Silence—a chime clock off stage may be effectively used here, chiming the hour of midnight. If no clock can be obtained, play the Mystery Theme here, but do not use bells in orchestra pit, or the illusion will be absolutely ruined.
- Cue 17. A weird monotony of gruesomeness and suspense—muted brass throughout.
- Cue 18. A light Novelette or Intermezzo as a relief to previous selections.
- Cue 19.—**MAMMY THEME**
- Cue 20. **SUSAN THEME**
- Cue 21. **MYSTERY THEME:** Silence until portrait crashes to floor; catch fall of painting on tympani, then start the music.
- Cue 22. A light eccentric selection used as relief.
- Cue 23. An ominous Mysterioso with a sinister character.
- Cue 24. **PAUL THEME**
- Cue 25. **MAMMY THEME**
- Cue 26. **GUARD THEME:** A March Mysterioso played "MF" and very marcato.
- Cue 27. **MYSTERY THEME:** A careful performance at this point is necessary, as the bookcase moves have brass crescendo very reedy with mutes; again with the appearance of the hand, and trill for strangulation and disappearance of Crosby.
- Cue 28. A furious Agitato depicting Annabelle's despair and fear; play open and start "P"—catch scream and work up.
- Cue 29. **MYSTERY THEME**

Continued on Back Cover

- Cue 30. **SUSAN THEME:** A chatter number characteristic of a gabbling woman—humoristic.
- Cue 31. **MAMMY THEME**
- Cue 32. **GUARD THEME:** A March Mysterioso—play “MF” and very marcato.
- Cue 33. An ominous Mysterioso of a sinister character.
- Cue 34. A weird Invocation brass muted—very sinister and fearful.
- Cue 35. A comic Mysterioso as a relief to previous sequences.
- Cue 36. A Dramatic Mysterioso.
- Cue 37. **SUSAN THEME:** A chatter number characteristic of a gabbling woman.
- Cue 38. **PAUL THEME**
- Cue 39. **LOVE THEME:** A popular song ballad with a text suitable for these two young lovers.
- Cue 40. **MYSTERY THEME**
- Cue 41. A comedy characteristic of a burlesque type played rather “P” with muted brass.
- Cue 42. A popular song appropriate to the situation.
- Cue 43. A weird comedy Mysterioso—start “P” and gradually accelerando to scream; try and catch scream on one of the “F” chords.
- Cue 44. **SUSAN THEME:** A chatter number as previously suggested.
- Cue 45. A Mysterioso burlesque very marked in tempo, but “P.”
- Cue 46. An agitated Mysterioso depicting the discovery of the jewel.
- Cue 47. An ominous mystical selection depicting the dark recesses of a haunted house at night.
- Cue 48. **MYSTERY THEME:** Play as at Cue 27, only eliminate the trill for finish; make the same crescendo, etc. though. Catch scream.
- Cue 49. A furious Agitato—play “F” until action slows down again.
- Cue 50. **MYSTERY THEME:** Stop music as panel opens—absolute quiet—just a dull thud on the tympani as body falls, then start music.
- Cue 51. A light agitated movement with plenty of action in the minor preferably. Wind effect again for corridor flashes.
- Cue 52. **PAUL THEME:** Play as previously.
- Cue 53. **MYSTERY THEME:** Play as previously.
- Cue 54. An Agitato showing the fearlessness of Paul as he enters dark recess. Horses’ hooffalls may be reproduced on tympani for milk wagon flashes. Music “PP” for exteriors.
- Cue 55. A weird mystical foreboding Mysterioso for the development of a new weird character.
- Cue 56. A dramatic Agitato with regular pizzicato bass for searching of Paul in dark cellar.
- Cue 57. A weird mystical foreboding Mysterioso as at Cue 55.
- Cue 58. An Agitato of a mystical type.
- Cue 59. **GUARD THEME:** A March Mysterioso—play “MF” and very marcato.
- Cue 60. Agitato full of action for a severe struggle of two men. Catch effects of falls, etc., on tympani—no cymbal crashes.
- Cue 61. A poursuite number with effect of horses’ hoofs reproduced on tympani, but not a galop.
- Cue 62. **MYSTERY THEME:** Play as at Cues 27 and 48 with the brass crescendos for opening of door, and hand clutching for Annabelle’s throat.
- Cue 63. A furious Agitato for the continuation of the struggle that started in the cellar—accelerando.
- Cue 64. A furious Agitato—a continuation of the previous number. Keep the motion going until the final capture by the police.
- Cue 65. **PAUL THEME:** A relief for the closing selection—play very bright.
- Cue 66. **LOVE THEME:** Start rather “MF,” and gradually crescendo for close; be sure and time this accurately for the finish.

THE END.